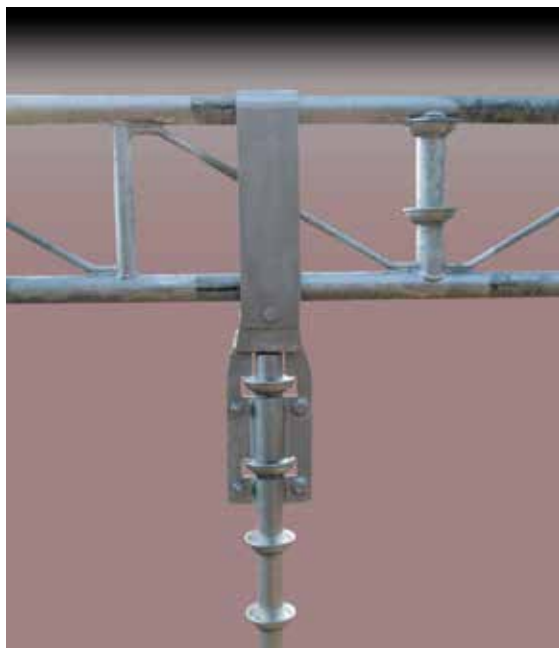


# VERTICAL LEG HANGING DEVICE WITH TRUSS STRAP

The following component is to be used to allow shortening of a scaffold bay along an Excel truss. The vertical leg hanging device can be installed by attaching the "U" strap over the truss and with the supplied bolt. This can be done while standing on an existing deck and sliding it into place using a horizontal member, thereby reducing employee exposures to a fall hazard.



Vertical Leg Hanging Device With Truss Strap



Vertical Leg Hanging Device Base Component

Part Number	Description	Maximum Load (lbs.)	Weight (lbs.)
VLHD	Vertical Leg Hanging Device	3,500	22.5

## Notes:

- 1) All OSHA and plant safety regulations governing suspended scaffolds must be followed.
- 2) No part of the newly added suspended scaffold should be used as a tie-off point until the scaffold is completed and verified for tie-off by a competent person
- 3) The vertical leg hanging device can only be used with provided "U" strap to ensure proper loading.
- 4) The scaffold must be properly braced to prevent deformation.
- 5) Scaffold weight loads must be calculated to prevent the overloading of the vertical leg hanging device component.
- 6) All scaffold components (deck boards, etc.) must be secured to the scaffold.

Clamp bolts should be tightened between 40 and 65 ft-lbs. Overtightening could damage the threads, bolt or item the clamp is attached to.

**All material must be inspected prior to use! See inspection guidelines on page 99 of the standard manual.**