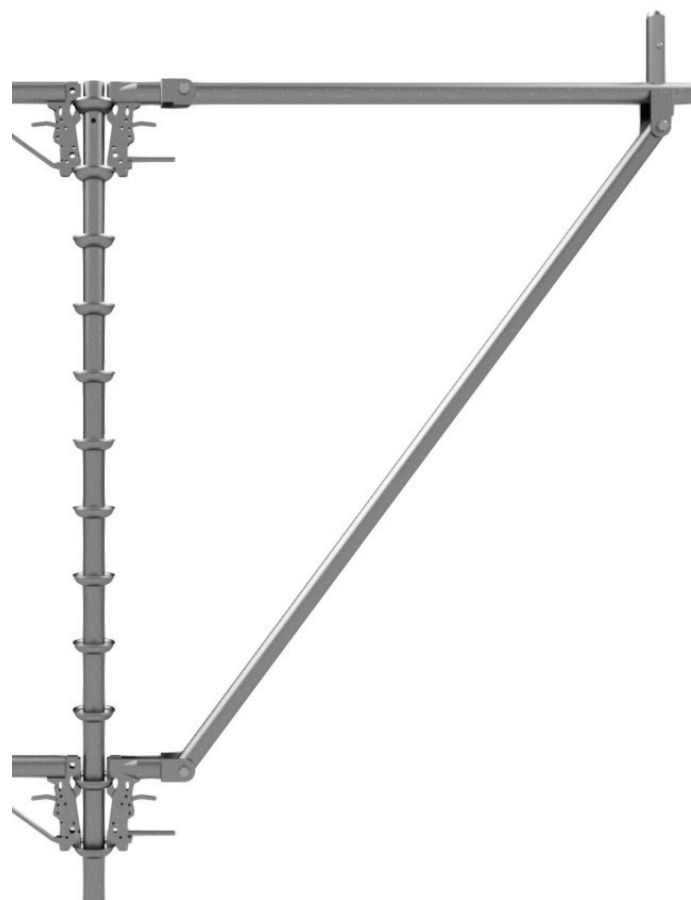


EXCEL MODULAR FOLDING SIDE BRACKET

Part Number	Description	Weight (lbs.)	Maximum Uniform Load (lbs. per ft.)	Maximum Load on End (lbs.)
FSB48	4' Folding Side Bracket	29.5	250	500
FSB60	5' Folding Side Bracket	33	20	500
FSB72	6' Folding Side Bracket	41.5	166	500



Excel folding side brackets are designed to provide scaffold deck extensions out to six (6) feet. They are also designed to fold up, so that they can be used inside vessels or places with narrow access where a normal side bracket will not fit.

Only two (2) folding side brackets can be used together. They cannot be placed on multiple scaffold bays to create a continuous deck.

The maximum deck width allowed is seven (7) feet.

Only one (1) work deck can be supported by any folding side bracket.

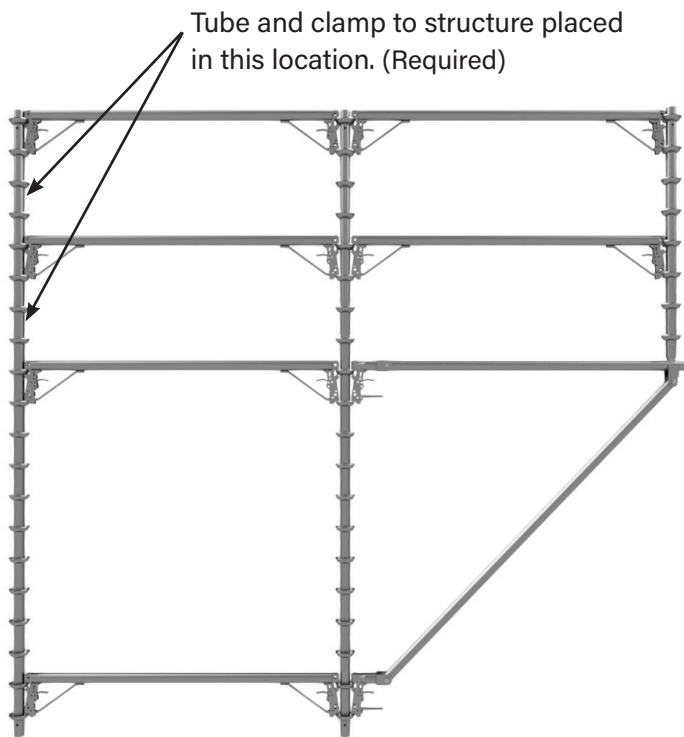
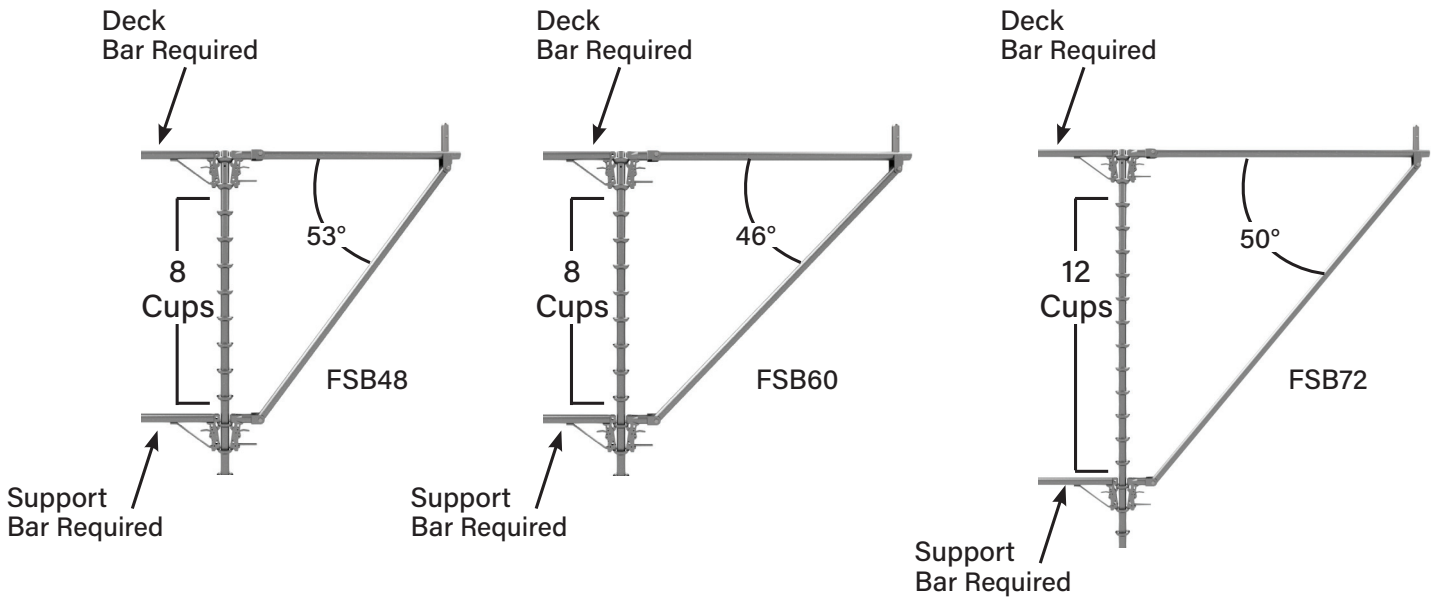
MATERIAL NOTE: All tubing is 1.90 diameter, 11-gauge (0.120 wall), high-strength, minimum 65,000 yield, and 75,000 tensile.



CAUTION: This item contains multiple pinch points.

**All material must be inspected prior to use!
See inspection guidelines on page 112.**

EXCEL MODULAR FOLDING SIDE BRACKET INSTALLATION



Attach scaffold to a permanent structure capable of preventing tipping of the scaffold.

**All material must be inspected prior to use!
See inspection guidelines on page 112.**

The scaffold supporting a folding side bracket must be properly braced and secured.

Horizontal bars must be placed at the deck location and a support bar must be placed at the diagonal connection.

BUILD NOTES:

1. All scaffolds using a folding side bracket **MUST** be secured to a permanent structure. The minimum requirement for tying is two (2) pieces of tube and clamp secured with beam clamps from a vertical on the opposite side of the scaffold to a permanent structure.
2. This is in addition to tying required by Federal, State or local regulations.
3. **The scaffold must be secured before the side brackets are installed.**
4. There is no width requirement of the scaffold the folding side bracket is being attached to because the scaffold **MUST** be secured to a permanent structure to prevent tipping.

EXCEL MODULAR FOLDING SIDE BRACKET INSTALLATION (CONT'D)

1 Unfold bracket letting all but the top end connector hang to the ground before locking connector at desired deck location.



2 Person below then raises lower end connector attaching it to appropriate height where top bar becomes level.



3 Repeat processes with identical sized bracket before squaring them to scaffold.

Squaring is easily done by gently shaking the bracket allowing it to rotate on cups.



CAUTION: Pinch point between trigger guard and tube. Person below assists to prevent bracket from falling or crushing installers hand.

Always use proper tie off when handling side brackets.

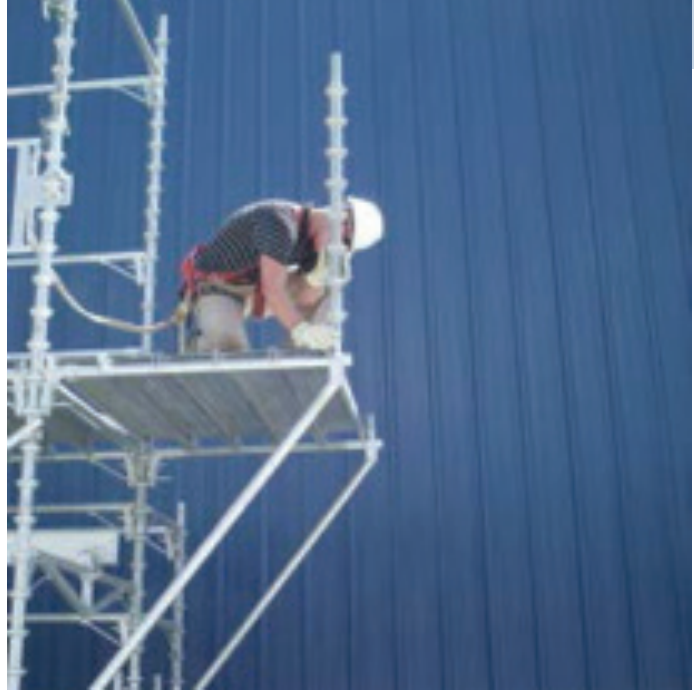
**All material must be inspected prior to use!
See inspection guidelines on page 112.**

EXCEL MODULAR FOLDING SIDE BRACKET INSTALLATION (CONT'D)

4 Properly seat boards to inside of brackets before sliding out to far edge. Continue process one at a time until fully decked.



5 Once decking is completed, install two (2) eight-cup verticals for handrail posts.



6 Complete by enclosing side rails (same length as bracket), then end rails (same as deck length) and finally adding the toe boards.



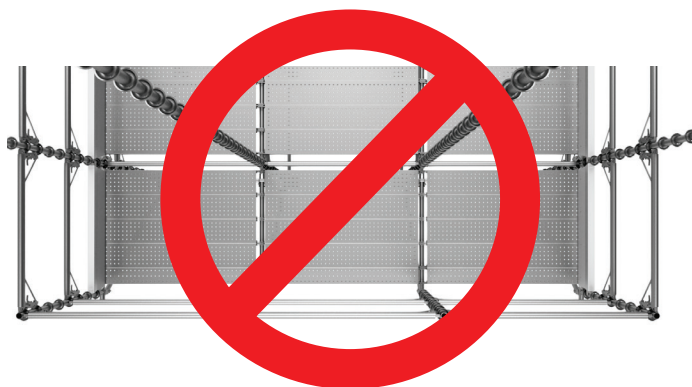
**All material must be inspected prior to use!
See inspection guidelines on page 112.**



**Always use proper tie off when
handling side brackets.**

EXCEL MODULAR FOLDING SIDE BRACKET LOADING

Bearer	Ledger Length											
	Length (inches)	PB24	PB32	PB36	PB42	PB48	PB60	PB72	PB84	HL96	HL108	HL120
FSB48	48	109	82	73	63	55	44	36	31	Not Allowed		
FSB60	60	88	66	58	50	44	35	29	25	Not Allowed		
FSB72	72	88	66	58	50	44	35	29	25	Not Allowed		

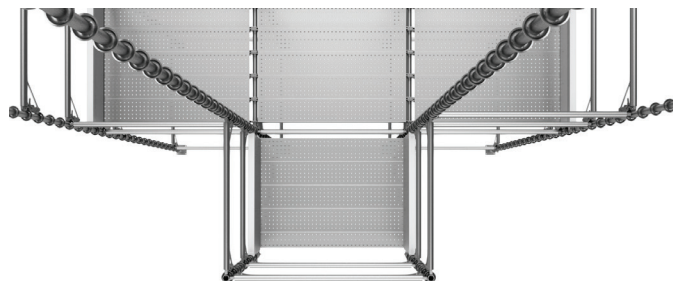


Multiple-bay design is **NEVER** allowed.

All areas below 25 lbs./sq. ft. do not meet OSHA requirements for a light-duty scaffold. OSHA 1926.451 (a) 6 in conjunction with non-mandatory Appendix A, define uniform loads for scaffold types. Deck planking or vertical members may be the limiting load carrying member.

BUILD NOTES:

1. Bearer supports the boards.
2. Scaffold must be properly braced when using folding side brackets.
3. Stability of the scaffold to prevent tipping must be considered when using any side bracket cantilever, folding side bracket design.



This is the only acceptable design.

**All material must be inspected prior to use!
See inspection guidelines on page 112.**