

EXCEL MODULAR ELEVATOR STRUT ASSEMBLY

Part Number	Description	Load Capacity (lbs.)	Weight (lbs.)
H-Plate	H-Plate for Back of Beam at Vertical with Bolts	15,000	42
PAS	Telescoping Adjustable Power Strut	15,000	220
SAS	Welded Strut Attachment with Shoe	15,000	84
S-Beam	Beam with Strut Plates	15,000	N/A

BUILD NOTES:

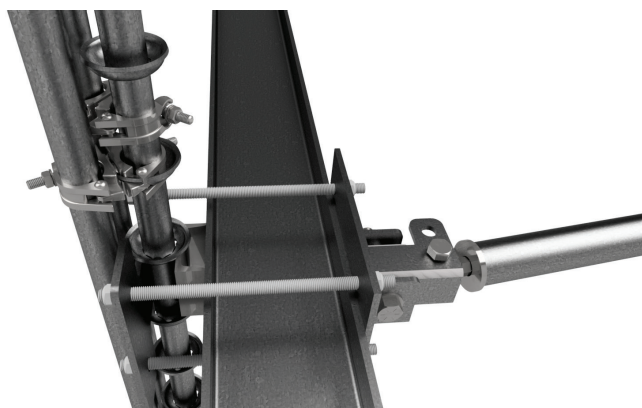
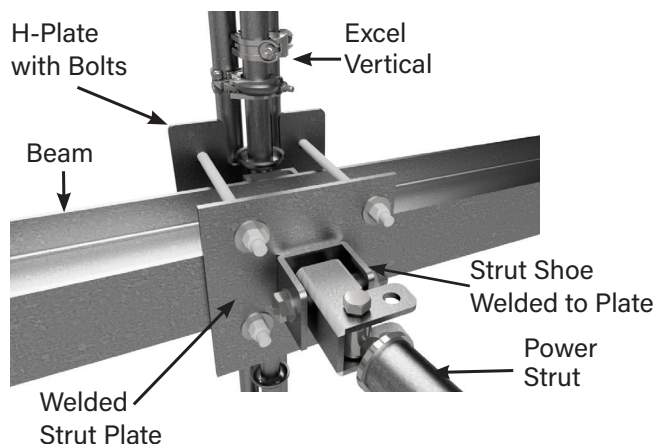
1. The elevator strut assembly shall only be used with Excel scaffolding equipment.
2. The elevator strut assembly shall be designed by a qualified Excel Engineer and have P.E. stamped drawings made prior to installation.
3. The elevator strut assembly is a custom system and must be designed for each application.
4. Only approved beams shall be used when installing the strut assembly.
5. The telescoping adjustable power strut has a maximum distance of 15 feet.



H-plate torque greatly affects the slip loading. Bolts attaching the plates to the vertical shall be tightened to 85 lbs. tension. Overtightening could damage the threads, bolts or items the assembly is attached to. Undertightening could result in the slipping at lower than rated loads.



CAUTION: There is a pinch point where the bolts clamp the plate and at the pivot point.



All material must be inspected prior to use! See inspection guidelines on page 43 of this manual.