

EXCEL MODULAR RAPID ACCESS SYSTEM

ACCESS EQUIPMENT

Part Number	Description	Galvanized Weight (lbs.)
RAS-HRA	Rapid Access System Handrail Adapter	9
RAS-SGA	Rapid Access System Safety Gate Adapter	3
RAS-SLHL	Rapid Access System Ship Ladder Hook Left	1
RAS-SLHR	Rapid Access System Ship Ladder Hook Right	1
RAS-TPB	Rapid Access System Telescoping Plank Bearer	33
RAS-LA5	Rapid Access System Ladder 5'	35
RAS-LA6	Rapid Access System Ladder 6'	42
RAS-LA7	Rapid Access System Ladder 7'	49
RAS-LA8	Rapid Access System Ladder 8'	56
RAS-LA9	Rapid Access System Ladder 9'	63
RAS-LA10	Rapid Access System Ladder 10'	70



All material must be inspected prior to use! See inspection guidelines on page 43 of this manual.

The Excel rapid access system provides “stair-like” scaffold access in areas where there is not enough room for a scaffold stair tower. The rapid access system facilitates getting a worker onto work platforms safely and quickly.

EXCEL MODULAR RAPID ACCESS SYSTEM (CONT'D)



RAS Ship Ladder Brackets

Rapid access system ship ladder hooks are easily installed and are attached over the top of a horizontal to provide support for the ladder.

The rapid access system telescoping plank bearer is adjustable for scaffold widths from five (5) feet to nine (9) feet. It is used to provide support for the board deck and supplies a vertical pin connection that allows an eight- (8) cup vertical to be installed for the gate, mid-rail and handrail.

The rapid access system handrail adapter has an Excel end connector on one end and a clamp on the other. It connects a standard vertical to the middle of any horizontal. For the rapid access system, it is used as the handrail and mid-rail on the back side of the floor opening.

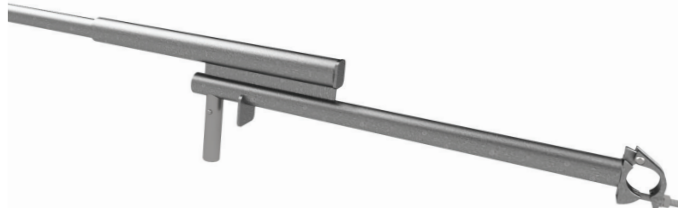
The rapid access system safety gate adapter connects between two (2) horizontals to provide a vertical post that can be used to attach the safety gate.

BUILD NOTES:

1. The safety gate must always open into the workspace, and closes against the vertical when it is completely closed.
2. Tube and clamp may be used instead of the rapid access system safety gate adapter.



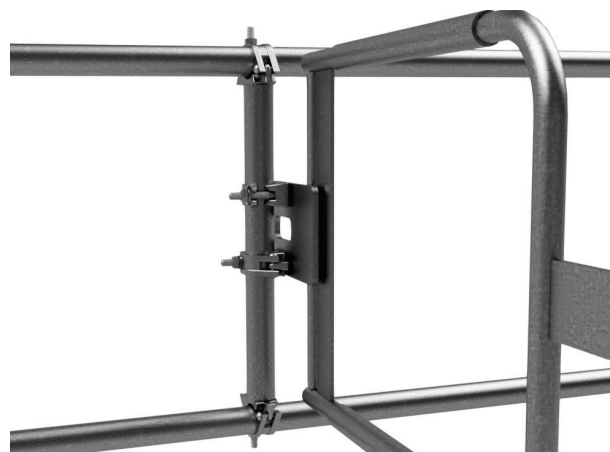
Clamp bolts should have between 40 and 65 lbs. tension. Overtightening could damage the threads, bolt or item the clamp is attached to.



RAS Telescoping Plank Bearer



RAS Handrail Adapter



RAS Safety Gate Adapter



ACCESS EQUIPMENT

All material must be inspected prior to use! See inspection guidelines on page 43 of this manual.

EXCEL MODULAR RAPID ACCESS SYSTEM (CONT'D)

ACCESS EQUIPMENT



BUILD NOTES:

1. Workers climb the interior of the scaffold tower where the maximum fall is limited to the deck height.
2. The opening is a 36-inch square that accommodates workers and their tools.
3. The opening is handrailed to prevent accidental falls back into access.
4. The rapid access system uses a standard safety gate attached to the horizontal bar for stepping off of the ladder onto the work deck.
5. The top of the handrail has a pin that allows for the insertion of a standard eight- (8) cup vertical gate post in the middle of the board deck.
6. A telescoping plank bearer goes under the long deck boards, allowing the attachment of the shorter deck boards required for the opening.
7. The rapid access system can accommodate construction of tower sizes ranging from five (5) feet x six (6) feet up to seven (7) feet x ten (10) feet without major design changes.
8. Adjustable hooks allow the ladder to remain at a thirty-degree angle, which requires less effort to climb and reduces slip hazards.
9. The rapid access system will accept telescoping metal toe boards to secure deck boards to the bearers.
10. The rapid access system can be used with other modular scaffold systems with minor modifications.
11. The rapid access system does not require special tools for installation and only a minimal amount of in-service training.
12. The rapid access system is meant only for light-duty applications and is limited to a maximum loading of no more than 25 lbs./sq. ft.
13. For scaffolds greater than one (1) work deck high, the rapid access system entrances must be installed in opposite corners of the work platform. The rapid access system is not designed to allow ladder accesses to be placed on top of each other in the same corner.

All material must be inspected prior to use! See inspection guidelines on page 43 of this manual.