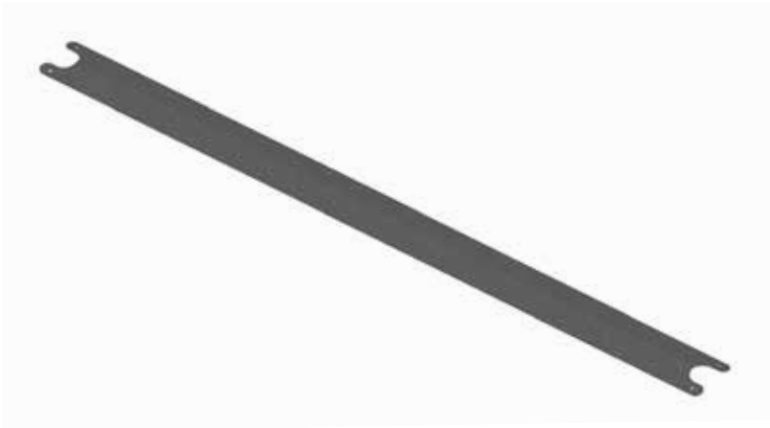


EXCEL MODULAR FILLER PLATES

Part Number	Description	Weight (lbs.)
FP24	Filler Plate 24"	3.1
FP32	Filler Plate 32"	4.2
FP36	Filler Plate 36"	4.7
FP42	Filler Plate 42"	5.5
FP48	Filler Plate 48"	6.3
FP60	Filler Plate 60"	7.8
FP72	Filler Plate 72"	9.4
FP84	Filler Plate 84"	10.9
FP96	Filler Plate 96"	12.5
FP108	Filler Plate 108"	14.1
FP120	Filler Plate 120"	15.6



Excel scaffold filler plates are designed to fit all types of scaffolding to cover gaps between wood or metal boards.

Filler plates come in various lengths and contain holes that allow the filler plate to be tied or nailed in place.

Filler plates are designed with wider slots on one end to allow the filler plate to be installed without bending.

MATERIAL SPECS: All filler plates are made from 10-gauge galvanized steel.

BUILD NOTE: When tying filler plates, a single strand of #9 wire at each end is required.

**All material must be inspected prior to use!
See inspection guidelines on page 112.**