

EXCEL MODULAR HORIZONTAL STORAGE RACK

Part Number	Description	Weight (lbs.)	Dimensions (inches) Width x Height	Max. Capacity (lbs.)
HR1	Horizontal Rack	79	44.5 x 38.5	3,000



Horizontal racks are designed for easy storage and inventory of Excel Modular Scaffold horizontals. Each rack holds 96 horizontals and uses four (4) horizontals for support, for a total of 100 horizontals. To perform a quick inventory, simply count the full racks.

When shipping, the horizontal racks require one (1) piece of banding to be placed around the 96 center horizontals.

Horizontal racks are designed so Excel casters can be placed on the bottom to allow the racks to be easily moved without a forklift.

STORAGE:

1. Horizontal racks may be stacked for storage. The strength of the storage surface will determine how many racks can be stacked.
2. On grass, dirt or other unpacked surfaces, racks should be placed singly.
3. On prepared surfaces and asphalt, racks can be placed two (2) or three (3) high.
4. On three (3) or more inches of concrete, racks may be stacked three (3) or four (4) units high.



WARNING: Racks should not be stacked more than four (4) units high.

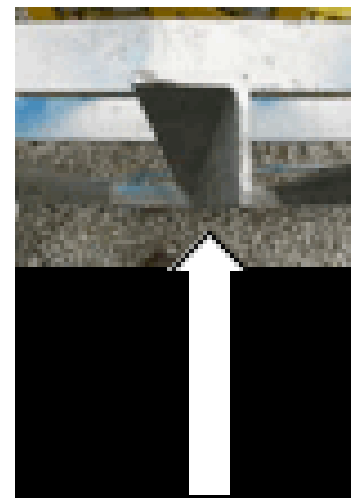
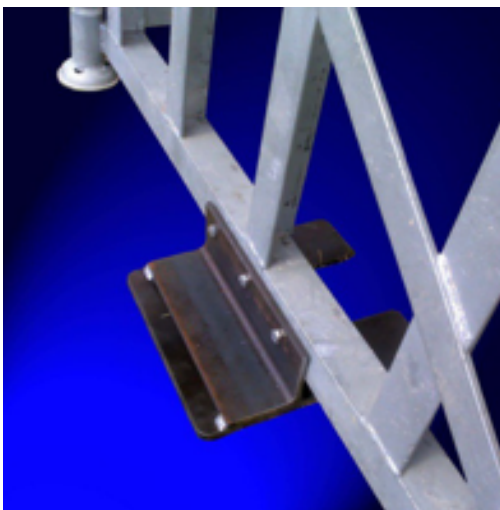
Horizontal racks MUST NOT be stacked when equipped with casters.



CAUTION: Always inspect the surface of the area where racks are stored for any cracking or sinking and inspect the racks for tilting or leaning.

**All material must be inspected prior to use!
See inspection guidelines on page 112.**

EXCEL MODULAR HORIZONTAL STORAGE RACK SUPPORT FOOT



Beware of Sharp Edges

Caution should be used when assembling or disassembling horizontal racks. The racks are heavy and have rough edges that can cause injury.

Care must be taken to make sure a loose rack will not fall. It should be safely supported on the ground or held by another worker during assembly and disassembly.

Always ensure the bottom horizontal is securely latched before beginning disassembly. The opposite horizontal rack can fall when the bottom horizontal is released if the horizontal is not securely latched on the other rack. Therefore, always disassemble racks from the outside.

A rack support foot may be added to the bottom of each horizontal rack to help prevent the rack from falling over when assembling and disassembling the racks. The rack foot will make it much harder for the rack to fall in either direction. However, the rack can still fall over if the ground is not level. The rack must be checked for stability before letting it stand on its own. Care must be taken to only assemble or disassemble racks on level ground.



CAUTION: Whenever assembling or disassembling racks without a rack support foot, do not leave a single rack standing without support.



**All material must be inspected prior to use!
See inspection guidelines on page 112.**